



Platinum Grout & Silicone

Presented by
Victoria Frail
Training & Documentation Manager



Quality Machines

“The best sealed machine in the industry”

Comes down to:

- . Cement
 - . Silicone
 - . Door seals
 - . Installation quality
-



Platinum Operation

- “ Sealing is important for:
- . Efficient operation
 - . Maintaining consistent temperature profiles
 - . CO2 build up in the first 10 days
 - . Humidity control
 - . Pressurization of the cabinet (+ intake, - exhaust)
-



Platinum Operation

- “ When a cabinet doesn't seal properly:
- . No CO2 buildup
 - . Loss of hatch
 - . Too much or too little moisture loss
 - . Airflow volume thrown off → ventilation thrown off
 - . Excessive troubleshooting by consultants and ventilation specialists
-



Procedures Covered

- “ Silicone Application
 - “ Grout Application

 - “ Based on the manufacturer’s recommended procedures
-



Room Conditions

- “ Minimum 65°F for a minimum of 24 hours before starting and after finishing
 - . All materials must come up to temperature
 - “ Warm and dry spaces = concrete shrinkage
 - . Have wetting materials available and on-hand
 - “ As clean as possible
 - . Clean before you begin to avoid stirring up dust into the silicone in particular
 - . Clean the application areas before beginning
-



Silicone Application

Presented by
Victoria Frail
Training & Documentation Manager



The Right Tools

- “ Caulking guns, as supplied
 - “ Use the tip supplied, without cutting it for visible caulking

 - “ Painter’s tape if necessary
 - . Some labourers will do a great job without it, some will not
-



The Right Tools (cont'd)



“ Caulking finishers

- . Not necessary for a good job
- . Corrects over-application
- . Still requires frequent cleaning of the tool
- . Technician's discretion
- . Opinions?



Silicone Application – Tips & Tricks

- “ Remember a little goes a long way
- “ Adjust amount applied as you go
- “ Work in small areas
- “ Tool with a finger and wipe frequently on a rag
 - . Ensure good supply of rags
 - . Do not use rag to tool the silicone
- “ Push rather than pull
 - . Fills the cavity better
 - . Can reduce tooling if done properly
 - . Work with what your crew is comfortable with



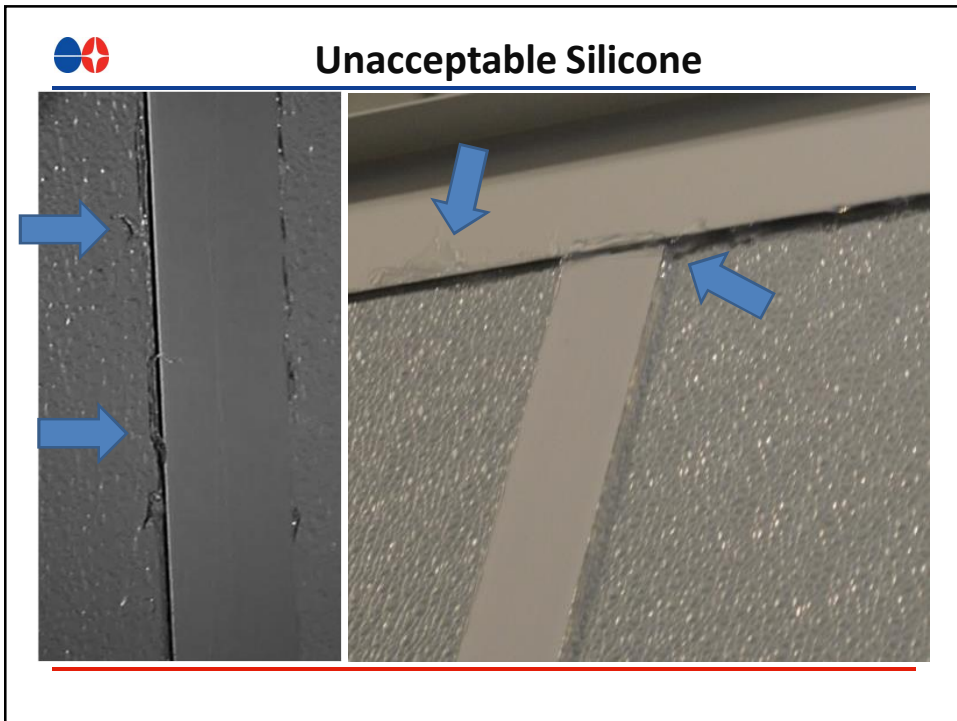
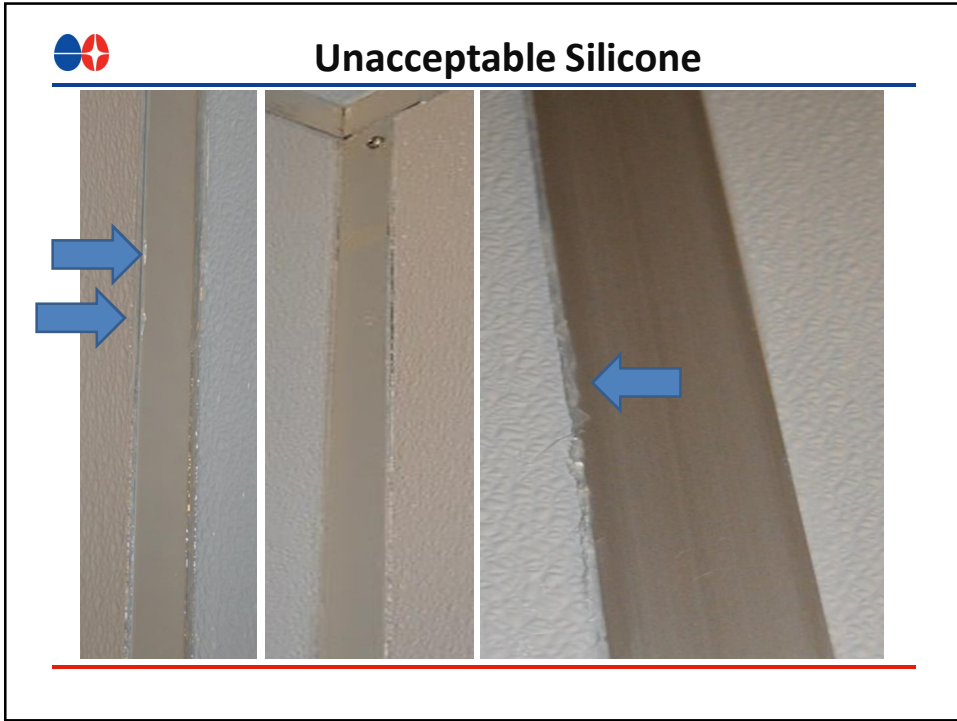
The Key to Clean Application

- “ Audition crew members, choose one with the most skill
- . Sometimes an inexperienced labourer is a better choice than an experienced one → more open to feedback
- “ Have the crew member who messed it up clean it off and redo it
- . They learn to take care by wanting to avoid re-doing it
-



Silicone Application - Procedure

	<p><i>Where should silicone be applied?</i></p> <ul style="list-style-type: none"> • Inside wall and base extrusions • On the joint between each panel and extrusion, inside and outside the cabinet • Along the manufacturing joint in the console • Around the temperature probe and back-up alarm insulation • Around installed dampers and fans, both inside and outside the cabinet • Between ECU supports and the wall • Around the edges of the ECU supports • Around each liquid tight 		
--	--	--	--





Unacceptable Silicone



Unacceptable Silicone

- “ Visible lumps, bumps, globs and raised areas
 - “ Streaking over onto the extrusion
 - “ Gaps in the bead
 - “ Thick bead that is noticeable
 - “ Internal silicone bulging out anywhere

 - “ **Remember:** Silicone may look OK when you first put it on, but it collects dust and debris so will darken and become more noticeable over time
-



Ideal Silicone

- “ Thin bead, completely sealing gaps
 - “ Barely visible
 - “ Smooth
-



Good Silicone





Grout Application

Presented by
Victoria Frail
Training & Documentation Manager



The Right Tools

- “ Trowels of varying sizes
 - . Notchless
 - . As narrow as possible (available as “caulking trowels” in small sizes i.e. 3/8”, 1/2”)
 - “ Float for smoothing

 - “ Blue painter’s tape

 - “ Spray bottle to keep concrete moist
 - “ Burlap or other coating to keep moisture in
-




Grout – Tips and Tricks

- “ Use a 2x4 on the opposite side of the channel to keep it from spilling over
 - “ Have one person on mixing duty, one on application, and one on cleaning and covering to get any spills immediately
-




Grout - Instruction

- “ Go over the application method carefully with the crew
 - “ Check frequently to ensure they are following the method and that the application is acceptable
-



Grout - Procedure

OP-() Step 1	<p><i>Prepare the application site:</i></p> <ul style="list-style-type: none"> Vacuum up loose dust and dirt Remove any oil, paint, coatings or curing compounds on the concrete Ensure the concrete is lightly textured Ensure all shims are completely located under the base channel <p>Note: Ensure the area and all materials are at minimum temperatures of 65°F (18.3°C) for 24 hours before beginning the application of concrete.</p>	<p>Throughout: Safety Shoes Safety Glasses Hearing protection as required Additional equipment as required by the site</p>
--------------	---	---



Practical

- “ With a partner, instruct your partner on how to apply the grout
- “ Use constructive criticism to help improve their application technique
- “ Switch roles
