

Hatchcom – All Versions

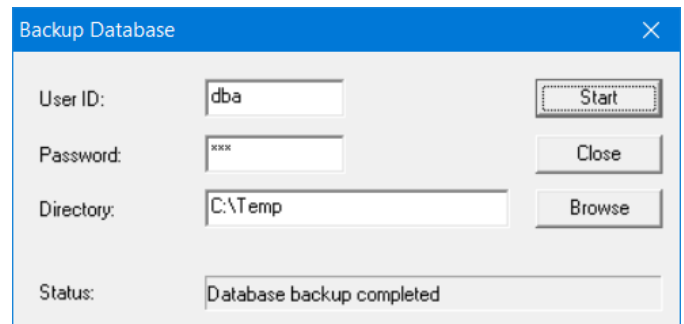
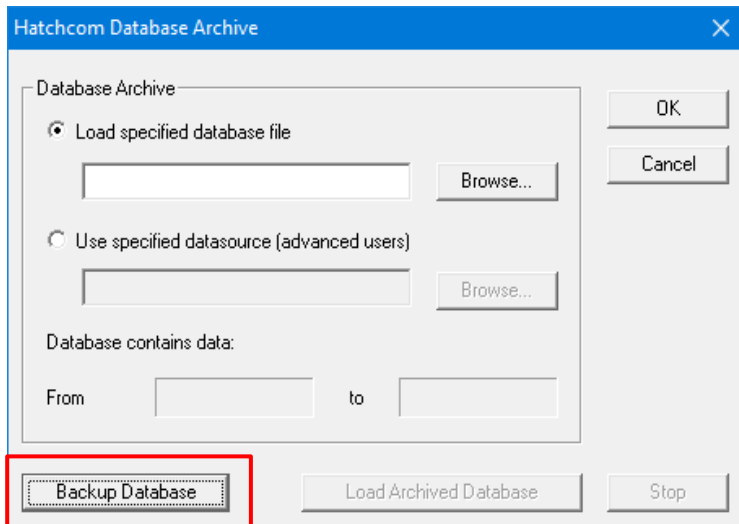
Database Back Up

Description

Jamesway recommends that all hatcheries back up their Hatchcom database monthly. The database should also be backed up after initial installation or set up on a new computer. This allows for a simple way to restore data and settings after changing computers or a Hatchcom error.

Process

1. Close all open windows in Hatchcom.
If there are windows open, the *Database Archive* option will not be included in the File menu dropdown.
2. From the File menu, select *Database Archive...*
3. Select *Backup Database*.
4. Select *Browse* to navigate to the folder you will store the backup in.
Note: Jamesway recommends this be a cloud or server based backup so it is available should the host computer fail.
5. The Status bar at the bottom of the window will show “Database backup completed” once finished.



Jamesway recommends setting an alarm in your calendar management system to back up the system regularly. You may also use the *Task Scheduler* application in Windows to do so.

For further details, please contact Jamesway.