

# Hatchcom 4

## Technician & Consultant's Introduction

Presented by  
**Victoria Frail**  
Training & Documentation Manager

---



# Hatchcom 4

---

- Technical Bulletin Available:
    - <https://www.jamesway.com/services/technical-bulletins-and-installation-guides>
  - Webinar for use and new features
    - [https://www.youtube.com/watch?v=0MG\\_BuuDMak&t=2s](https://www.youtube.com/watch?v=0MG_BuuDMak&t=2s)
-



# Major Changes

---

- Complete Interface overhaul
    - Platinum look
    - More graphic & modern
    - Less language
  - Maintenance scheduling functions
  - Redesigned reporting
  - Increased call out functionality
  - Automatic database backup
  - Full new manual available in the software
-



# Installation Procedure

---

- [J:\Controlled Documents\1.10 Customer Service\Operator Instructions\OP100034-Hatchcom 4 Installation.docx](#)



# Layout Setup

Hatchcom 4



123

Screen Report Alarm Report Statistics Maintenance Callout **Edit Layout** Database Preferences Help



+

☐

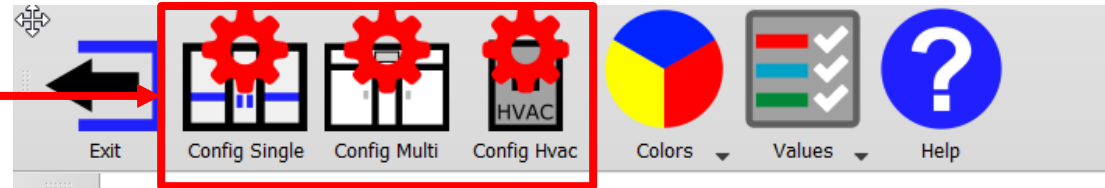
-



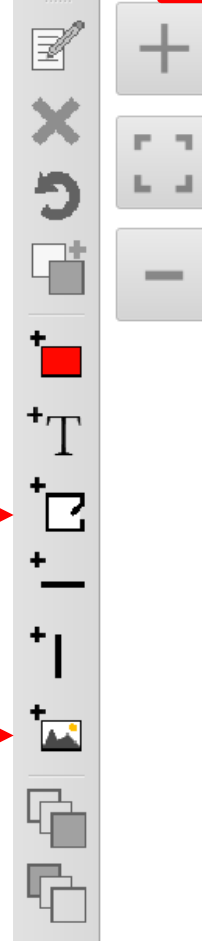


# Layout Modification

Add machines/HVAC  
(Ethernet machines add  
automatically)



Add "Room" placeholder



Add an image  
(i.e. logo, layout, etc)

