

	Part Name / Description: 1002266-69, 2291-98 CTL Retrofit	Instruction #: OP100043	Page 1 of 5
	Operation Instruction Title: Platinum Control Retrofit Breaker Kits	Revision Date: 02-01-2019	Revised By: V.Frail
		Revision No. 0	Approved By: S.Ditner

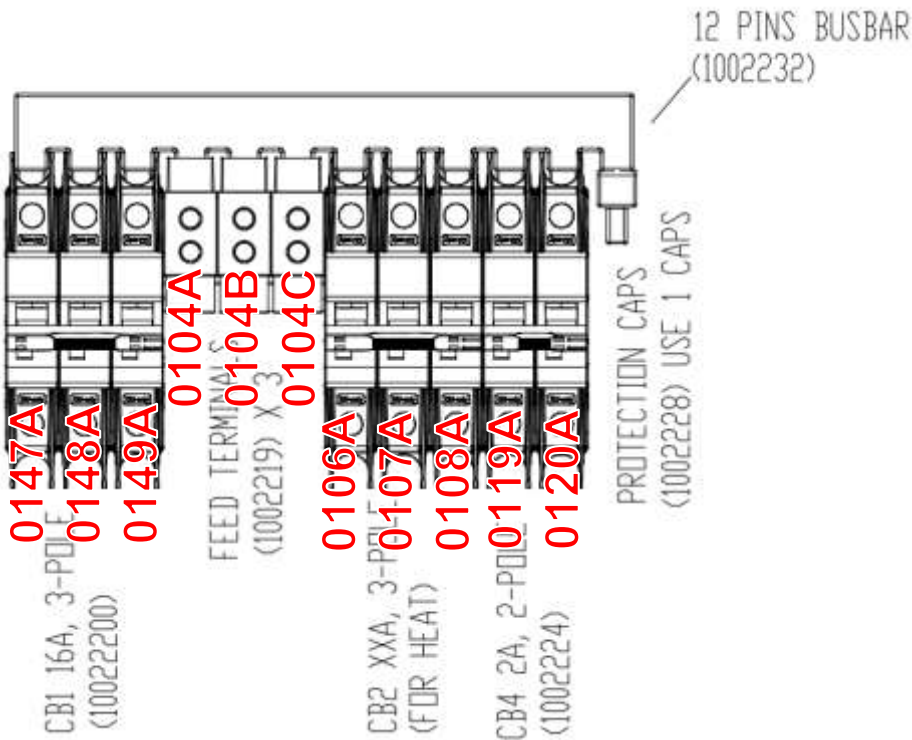
Step (picture)	Step (Instructions)	Step (Tools Required)	Step (Safety & PPE)																																							
Breaker Retrofit Kits <table border="1" data-bbox="347 427 1251 947"> <thead> <tr> <th>Part #</th> <th>Machine Type</th> <th>Electrical Supply</th> </tr> </thead> <tbody> <tr> <td>1002266</td> <td>Single Depth Electric Heat</td> <td>200-240 VAC 3 PH</td> </tr> <tr> <td>1002267</td> <td>Single Depth Electric Heat</td> <td>380-480 VAC 3 PH</td> </tr> <tr> <td>1002268</td> <td>Single or Double Depth Water Heat</td> <td>200-240 VAC 3 PH</td> </tr> <tr> <td>1002269</td> <td>Single or Double Depth Water Heat</td> <td>380-480 VAC 3 PH</td> </tr> <tr> <td>1002291</td> <td>Single or Double Depth Water Heat</td> <td>200-240 VAC 1 PH</td> </tr> <tr> <td>1002292</td> <td>Double Depth Electric Heat</td> <td>200-240 VAC 3 PH</td> </tr> <tr> <td>1002293</td> <td>Double Depth Electric Heat</td> <td>380-480 VAC 3 PH</td> </tr> <tr> <td>1002294</td> <td>Hatcher with Fan – Single Depth Water Heat</td> <td>380-480 VAC 3 PH</td> </tr> <tr> <td>1002295</td> <td>Hatcher with Fan – Single Depth Water Heat</td> <td>200-240 VAC 3 PH</td> </tr> <tr> <td>1002296</td> <td>Hatcher with Fan – Single Depth Electric Heat</td> <td>200-240 VAC 3 PH</td> </tr> <tr> <td>1002297</td> <td>Hatcher with Fan – Single Depth Electric Heat</td> <td>380-480 VAC 3 PH</td> </tr> <tr> <td>1002298</td> <td>Hatcher with Fan – Single Depth Water Heat</td> <td>200-240 VAC 1 PH</td> </tr> </tbody> </table>				Part #	Machine Type	Electrical Supply	1002266	Single Depth Electric Heat	200-240 VAC 3 PH	1002267	Single Depth Electric Heat	380-480 VAC 3 PH	1002268	Single or Double Depth Water Heat	200-240 VAC 3 PH	1002269	Single or Double Depth Water Heat	380-480 VAC 3 PH	1002291	Single or Double Depth Water Heat	200-240 VAC 1 PH	1002292	Double Depth Electric Heat	200-240 VAC 3 PH	1002293	Double Depth Electric Heat	380-480 VAC 3 PH	1002294	Hatcher with Fan – Single Depth Water Heat	380-480 VAC 3 PH	1002295	Hatcher with Fan – Single Depth Water Heat	200-240 VAC 3 PH	1002296	Hatcher with Fan – Single Depth Electric Heat	200-240 VAC 3 PH	1002297	Hatcher with Fan – Single Depth Electric Heat	380-480 VAC 3 PH	1002298	Hatcher with Fan – Single Depth Water Heat	200-240 VAC 1 PH
Part #	Machine Type	Electrical Supply																																								
1002266	Single Depth Electric Heat	200-240 VAC 3 PH																																								
1002267	Single Depth Electric Heat	380-480 VAC 3 PH																																								
1002268	Single or Double Depth Water Heat	200-240 VAC 3 PH																																								
1002269	Single or Double Depth Water Heat	380-480 VAC 3 PH																																								
1002291	Single or Double Depth Water Heat	200-240 VAC 1 PH																																								
1002292	Double Depth Electric Heat	200-240 VAC 3 PH																																								
1002293	Double Depth Electric Heat	380-480 VAC 3 PH																																								
1002294	Hatcher with Fan – Single Depth Water Heat	380-480 VAC 3 PH																																								
1002295	Hatcher with Fan – Single Depth Water Heat	200-240 VAC 3 PH																																								
1002296	Hatcher with Fan – Single Depth Electric Heat	200-240 VAC 3 PH																																								
1002297	Hatcher with Fan – Single Depth Electric Heat	380-480 VAC 3 PH																																								
1002298	Hatcher with Fan – Single Depth Water Heat	200-240 VAC 1 PH																																								
OP100043 Step 1 	Lock and tag out any machine connected to mains power at the main breaker.	Lock out tag out kit	Throughout: Safety Shoes Safety Glasses Additional equipment as required by the site																																							
OP100043 Step 2	Carefully remove the existing breakers assembly, taking care not to damage the wires removed.	Flat head screwdriver																																								
OP100043 Step 3	Install the replacement breaker assembly on to the DIN rail.	Screwdrivers																																								
OP100043 Step 4	For damper exhaust hatchers ONLY , remove the SSR1 assembly as follows: <ul style="list-style-type: none"> Remove CB5 (2A) and the jumpers feeding the SSR1 Remove the SSR1 Heat shrink each wire that was feeding the SSR1 Note: The circuit breaker for the hatcher powered exhaust fan will not be replaced in this instance.	Screwdrivers Heat gun																																								

	Part Name / Description: 1002266-69, 2291-98 CTL Retrofit	Instruction #: OP100043	Page 2 of 5
	Operation Instruction Title: Platinum Control Retrofit Breaker Kits	Revision Date: 02-01-2019	Revised By: V.Frail
		Revision No. 0	Approved By: S.Ditner

Step (picture)	Step (Instructions)	Step (Tools Required)	Step (Safety & PPE)						
OP100043 Step 5	Affix a "LINE" label on the lower side of the disconnect switch, showing where the line voltage comes in.								
OP100043 Step 6 Torque Specifications <table border="1" style="width: 100%;"> <thead> <tr> <th>Location</th> <th>Torque Spec</th> </tr> </thead> <tbody> <tr> <td>Circuit breakers, all</td> <td>2.5 N·m</td> </tr> <tr> <td>Power feed terminals (1002219)</td> <td>3.5 N·m</td> </tr> </tbody> </table>	Location	Torque Spec	Circuit breakers, all	2.5 N·m	Power feed terminals (1002219)	3.5 N·m	Complete the wire terminations as shown below according to the retrofit you are performing. When complete, remove the lock out kit, power on the machine and ensure it functions.	Screwdrivers	
Location	Torque Spec								
Circuit breakers, all	2.5 N·m								
Power feed terminals (1002219)	3.5 N·m								

1002266, 1002267 Single Depth Electric, Incubators or Hatchers Without Fan 200-240 VAC 3 PH, 380-480 VAC 3 PH

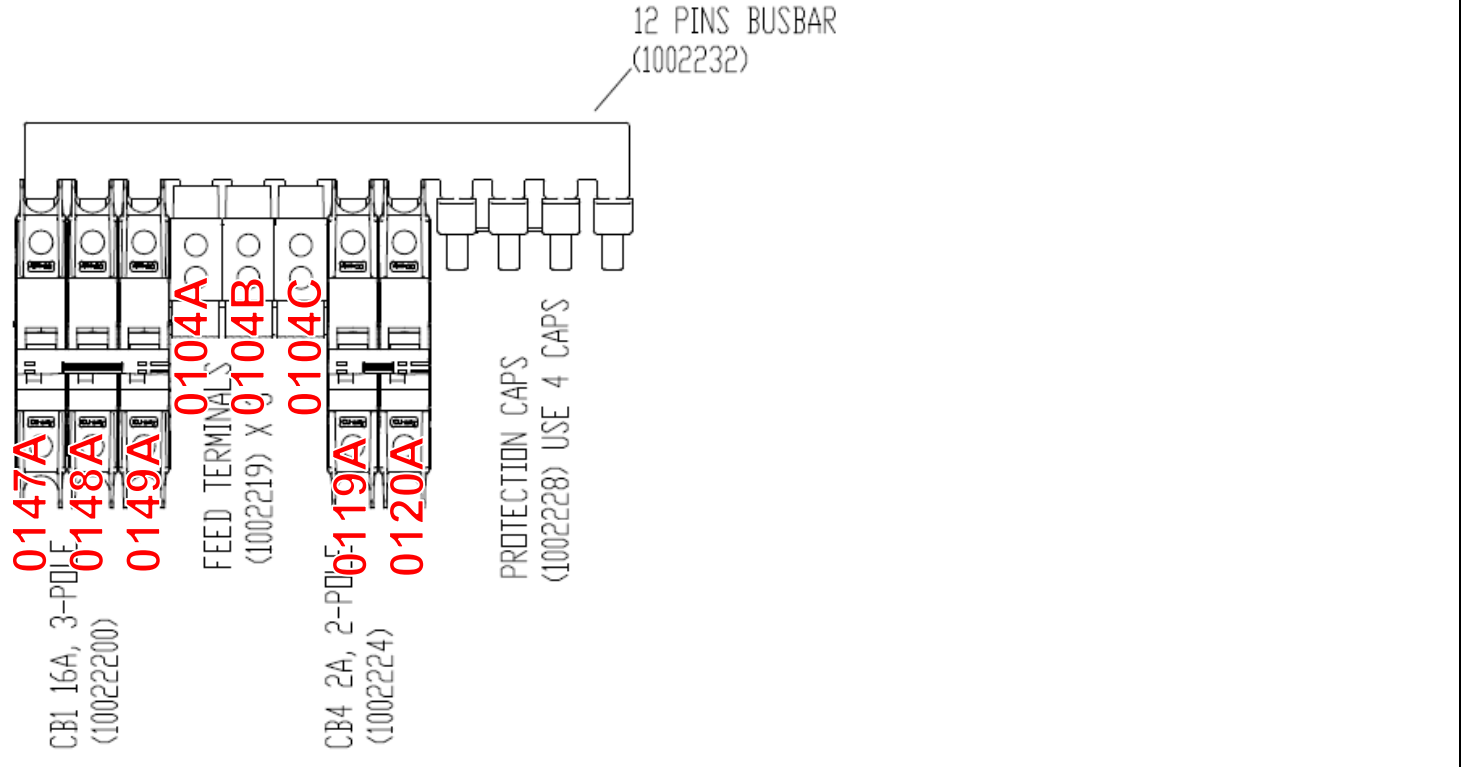
Note: 1002266 for 200-240V 3PH uses a 20 A breaker (1002222)
 1002267 for 380-480 VAC 3PH uses a 13 A breaker (1002221)



	Part Name / Description: 1002266-69, 2291-98 CTL Retrofit	Instruction #: OP100043	Page 3 of 5
	Operation Instruction Title: Platinum Control Retrofit Breaker Kits	Revision Date: 02-01-2019	Revised By: V.Frail
		Revision No. 0	Approved By: S.Ditner

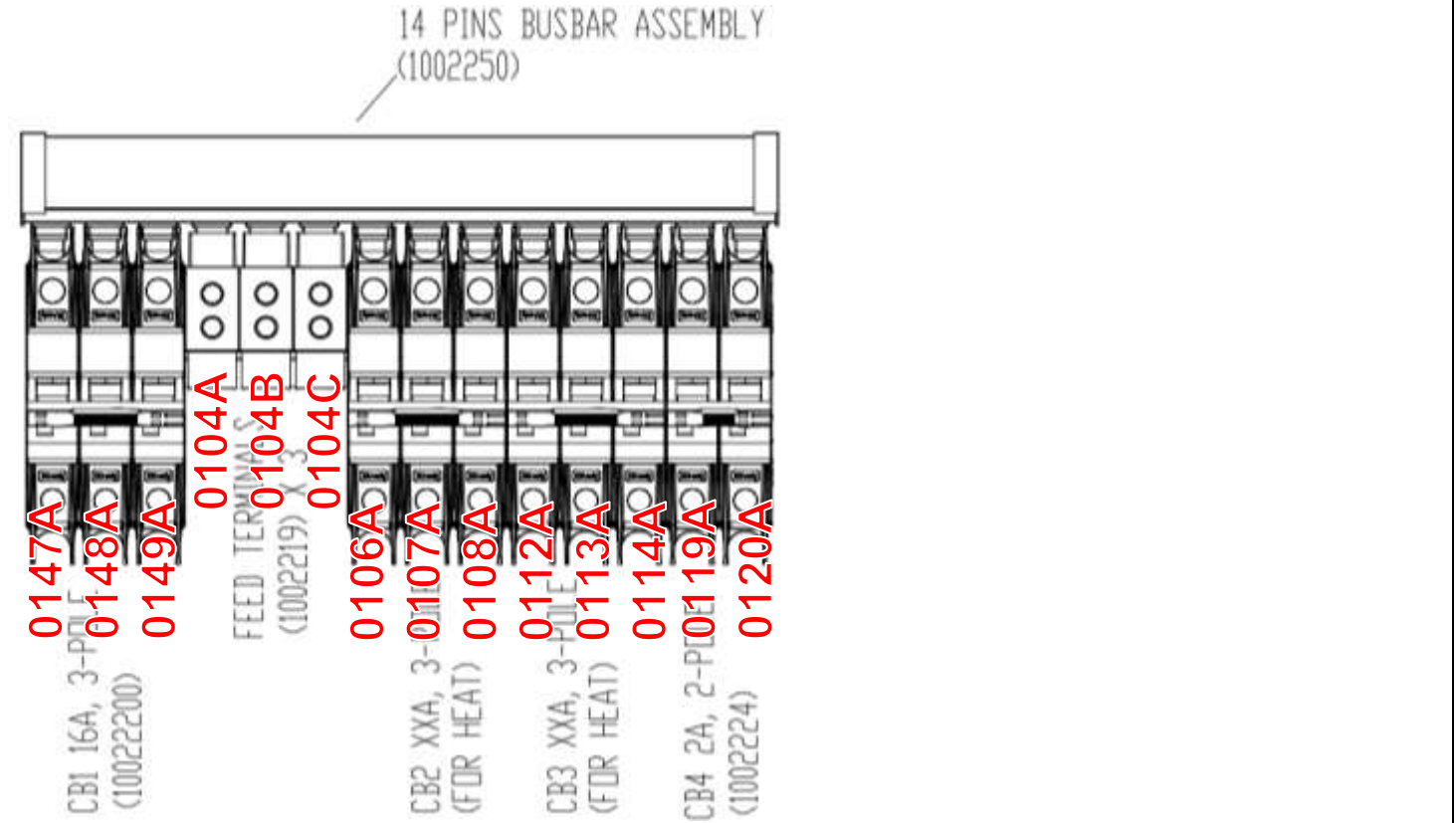
Step (picture)	Step (Instructions)	Step (Tools Required)	Step (Safety & PPE)
----------------	---------------------	-----------------------	---------------------


1002268, 1002269 Single Depth or Double Depth Water, Incubators or Hatchers without Fan 200-240 VAC 3 PH, 380-480 VAC 3 PH
1002291 Single Depth Water Incubators or Hatchers without Fan 200-240 VAC 1 PH



1002292, 1002293 Double Depth Electric 200-240 VAC 3 PH, 380-480 VAC 3 PH

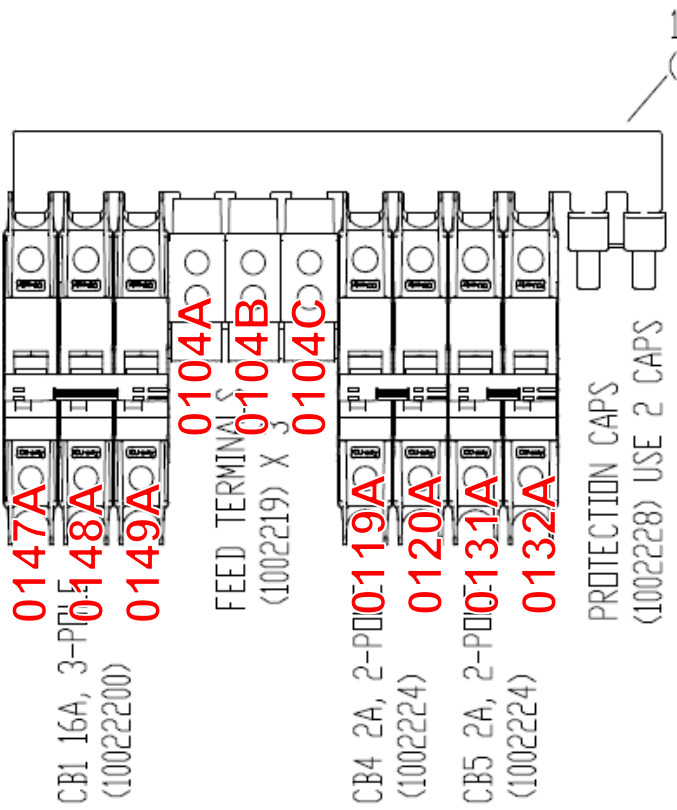
Note: 1002292 for 200-240V 3PH uses 20 A breakers (1002222), 1002293 for 380-480 VAC 3PH uses 13 A breakers (1002221)



	Part Name / Description: 1002266-69, 2291-98 CTL Retrofit	Instruction #: OP100043	Page 4 of 5
	Operation Instruction Title: Platinum Control Retrofit Breaker Kits	Revision Date: 02-01-2019	Revised By: V.Frail
		Revision No. 0	Approved By: S.Ditner

Step (picture)	Step (Instructions)	Step (Tools Required)	Step (Safety & PPE)
----------------	---------------------	-----------------------	---------------------

1002294, 1002295 Single Depth Water, Hatchers with Fan 380-480 VAC 3 PH, 200-240 VAC 3 PH



12 PINS BUSBAR (1002232)

0147A
CB1 16A, 3-P (10022200)

0148A

0149A

0104A
FEED TERMINALS (1002219) X 3

0104B

0104C

0119A
CB4 2A, 2-P (1002224)

0120A

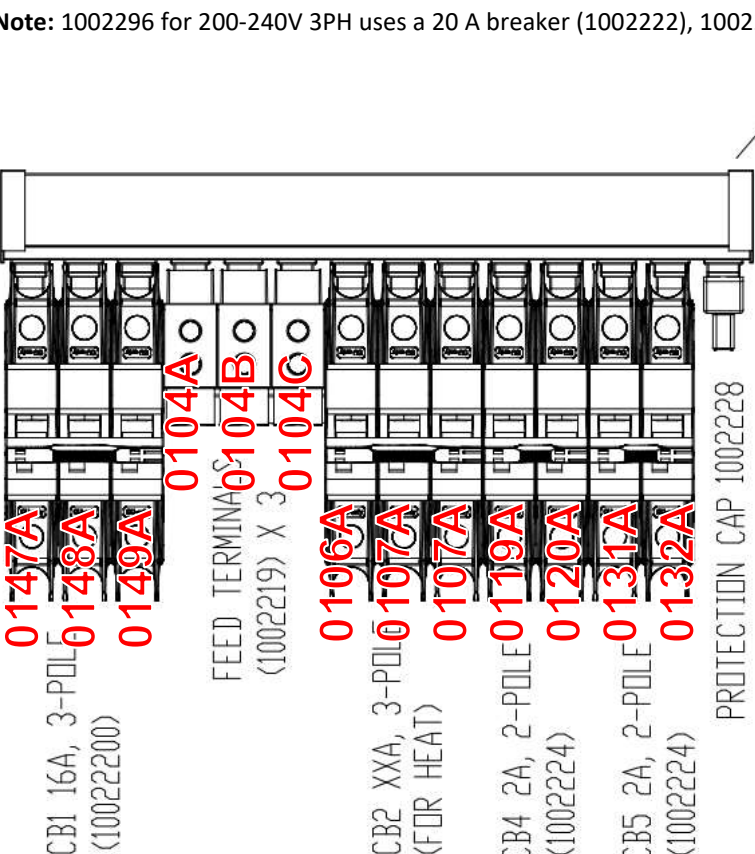
0131A
CB5 2A, 2-P (1002224)

0132A

PROTECTION CAPS (1002228) USE 2 CAPS

1002296, 1002297 Single Depth Electric Heat, Hatchers with Fan 200-240 VAC 3 PH, 380-480 VAC 3 PH

Note: 1002296 for 200-240V 3PH uses a 20 A breaker (1002222), 1002297 for 380-480 VAC 3PH uses a 13 A breaker (1002221)



14 PINS BUSBAR (1002250)

0147A
CB1 16A, 3-P (10022200)

0148A

0149A

0104A
FEED TERMINALS (1002219) X 3

0104B

0104C

0106A
CB2 XXA, 3-P (FOR HEAT)

0107A

0107A


0119A
CB4 2A, 2-P (1002224)

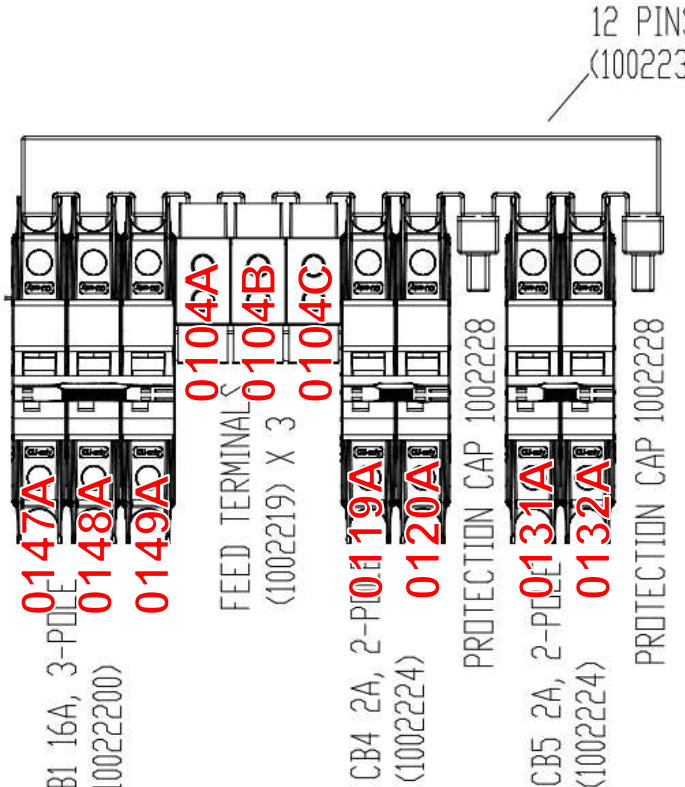
0120A

0131A
CB5 2A, 2-P (1002224)

0132A

PROTECTION CAP 1002228

	Part Name / Description: 1002266-69, 2291-98 CTL Retrofit	Instruction #: OP100043	Page 5 of 5
	Operation Instruction Title: Platinum Control Retrofit Breaker Kits	Revision Date: 02-01-2019	Revised By: V.Frail
		Revision No. 0	Approved By: S.Ditner

Step (picture)	Step (Instructions)	Step (Tools Required)	Step (Safety & PPE)
<p>1002298 Single Depth Water, Hatchers with Fan 200-240 VAC 1 PH</p>  <p>12 PINS BUSBAR (1002232)</p> <p>0147A CB1 16A, 3-POLE (10022200)</p> <p>0148A 0149A</p> <p>0104A 0104B 0104C FEED TERMINALS (1002219) X 3</p> <p>0119A 0120A CB4 2A, 2-POLE (1002224)</p> <p>PROTECTION CAP 1002228</p> <p>0131A 0132A CB5 2A, 2-POLE (1002224)</p> <p>PROTECTION CAP 1002228</p>			