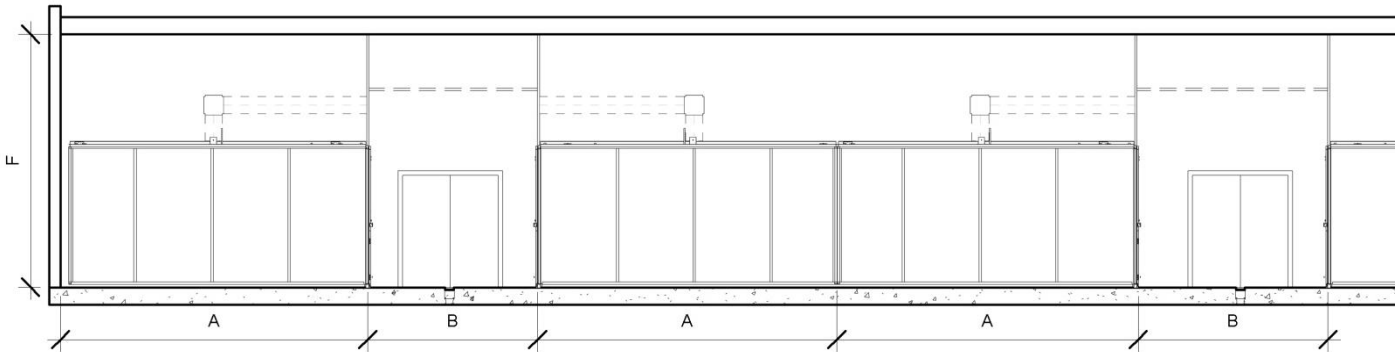


INCUBATOR ROOM



A. FLOOR UNDER INCUBATORS

Single depth cabinets (P20, P40, P60): 112 in (2484 mm)

Double depth cabinets (P80, P120): 211 in (5353 mm)

Floor must meet or exceed ACI 117 F_f/F_L 35/25 with a maximum slope of $\frac{1}{2}$ " per 10 feet towards the hallway.

B. INCUBATOR ROOM HALLWAY

Recommended width: 8-10 ft (2438 - 3048 mm)

Minimum width: 7 ft (2134 mm)

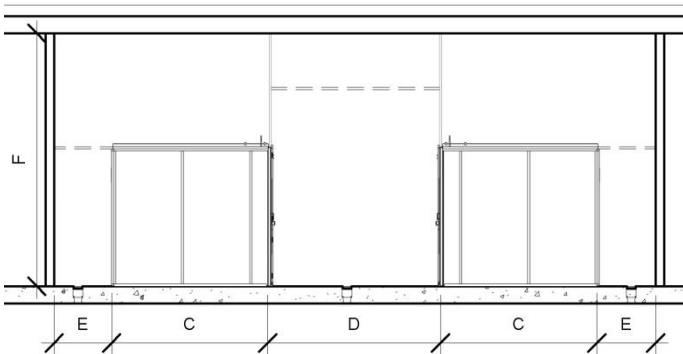
Floor must meet or exceed ACI 117 F_f/F_L 35/25 with a maximum slope of $\frac{1}{2}$ " per 10 feet. Floor sloped to drain.

Drains centred down the length of the hallway; trough, slot or spot drains.

F. ROOM HEIGHT

Recommended height: 14-16 ft (4267 – 4877 mm)

HATCHER ROOM



C. FLOOR UNDER HATCHERS

Single depth cabinets (P20, P30, P40): 112 in (2484 mm)

Floor must meet or exceed ACI 117 F_f/F_L 35/25 with a maximum slope of $\frac{1}{2}$ " per 10 feet towards the hallway

D. HATCHER ROOM HALLWAY

Recommended width: 8-10 ft (2438 - 3048 mm)

Minimum width: 7 ft (2134 mm)

Floor must meet or exceed ACI 117 F_f/F_L 35/25 with a maximum slope of $\frac{1}{2}$ " per 10 feet. Floor sloped to drain.

Drains centred down the length of the hallway; trough or slot drains.

E. HATCHER ROOM PLENUMS

Recommended width: 39 in (1000 mm)

Minimum width: 30 in (762 mm)

Drain centred down the length of the plenum or at the wall opposite the hatchers; trough or slot drains.

F. ROOM HEIGHT

Recommended height: 14-16 ft (4267 – 4877 mm)